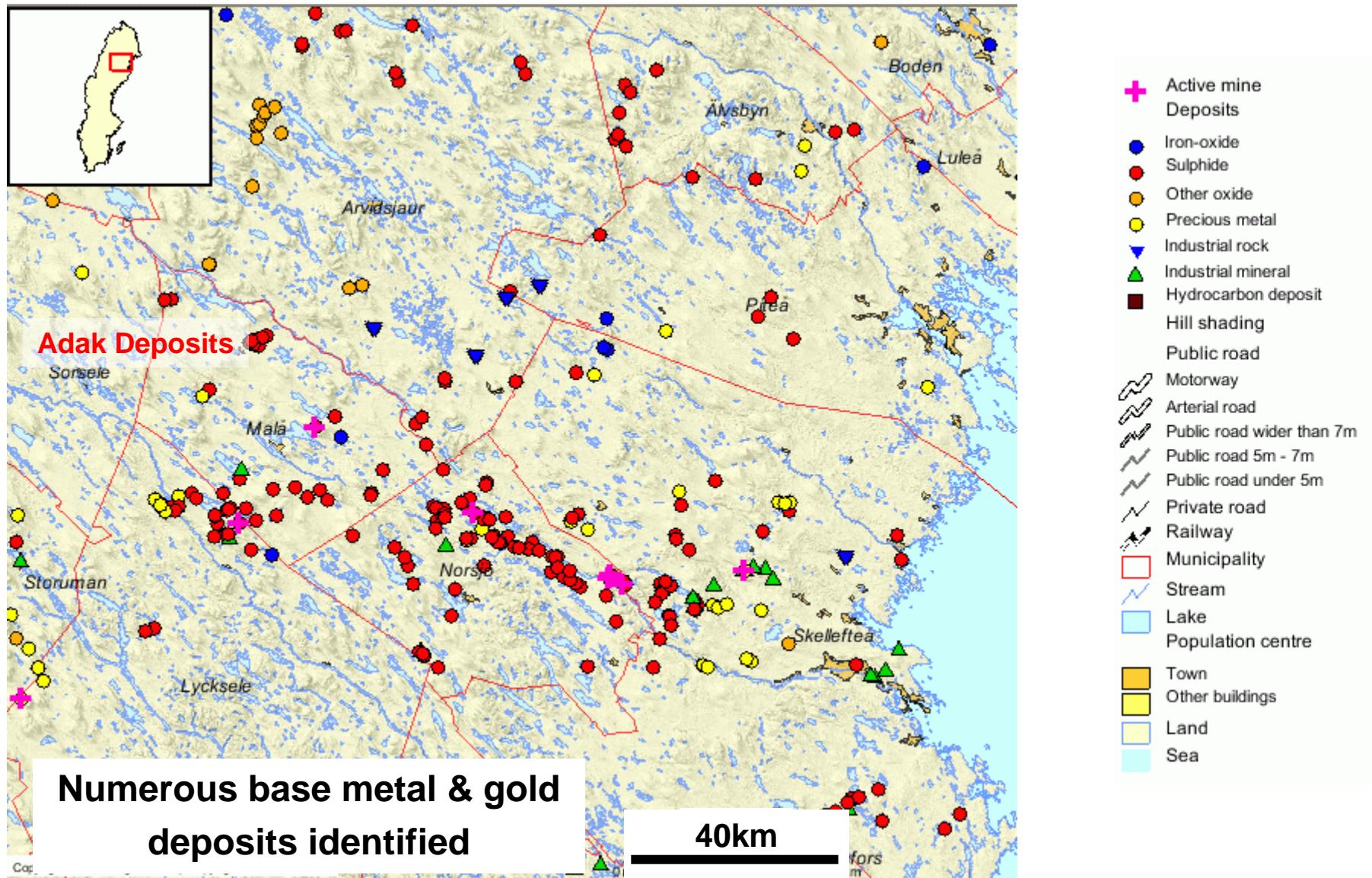


# Adak Project

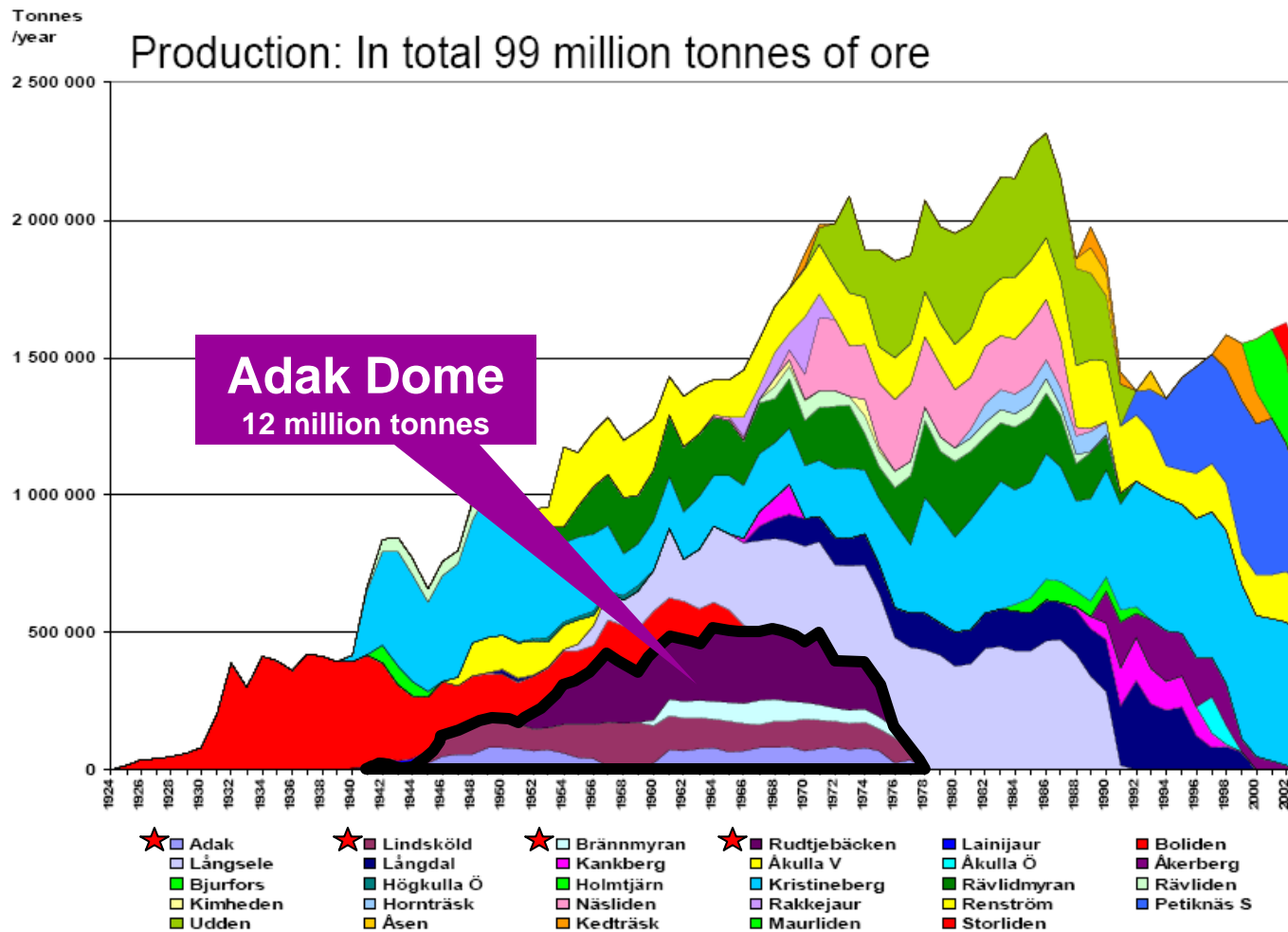
Prepared for  
Avalon Minerals Limited

# Skellefte District – Mineral Deposits



# Skellefte District – Past Production

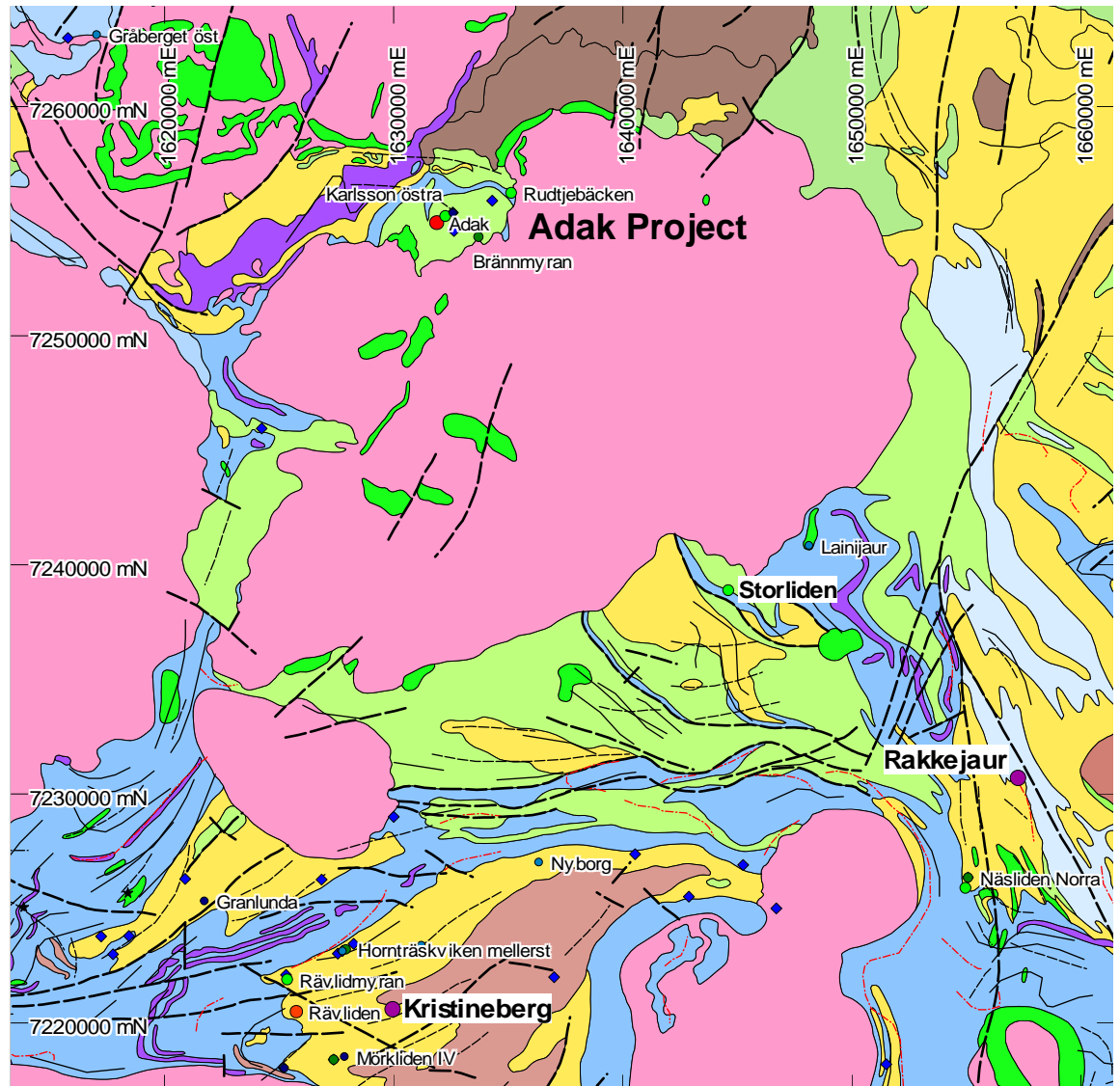
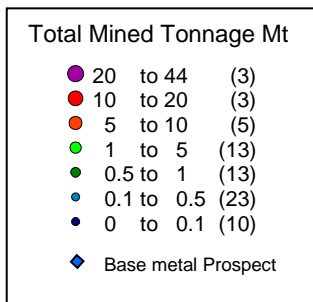
29 mines 1925-2003



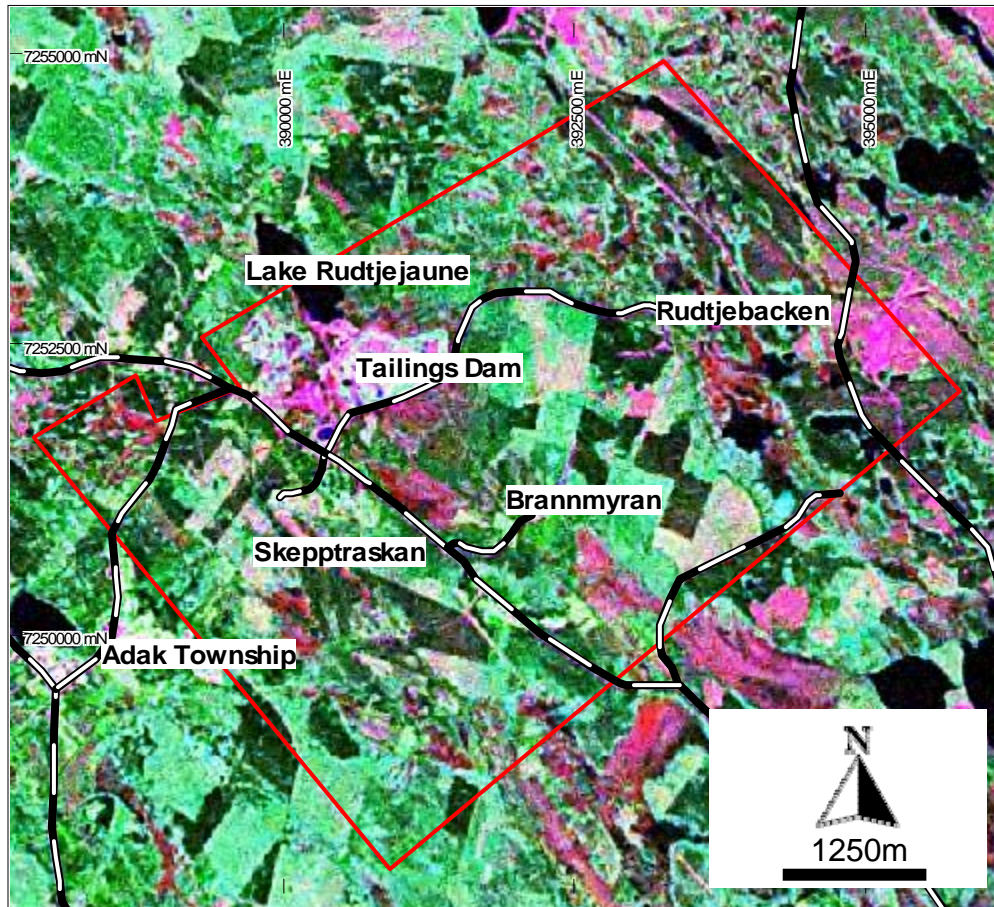
Source: New Boliden

Total pre-mining reserves 160Mt @ 0.7% Cu, 3% Zn, 0.4% Pb, 1.9g/t Au & 47g/t Ag

# Regional Geology



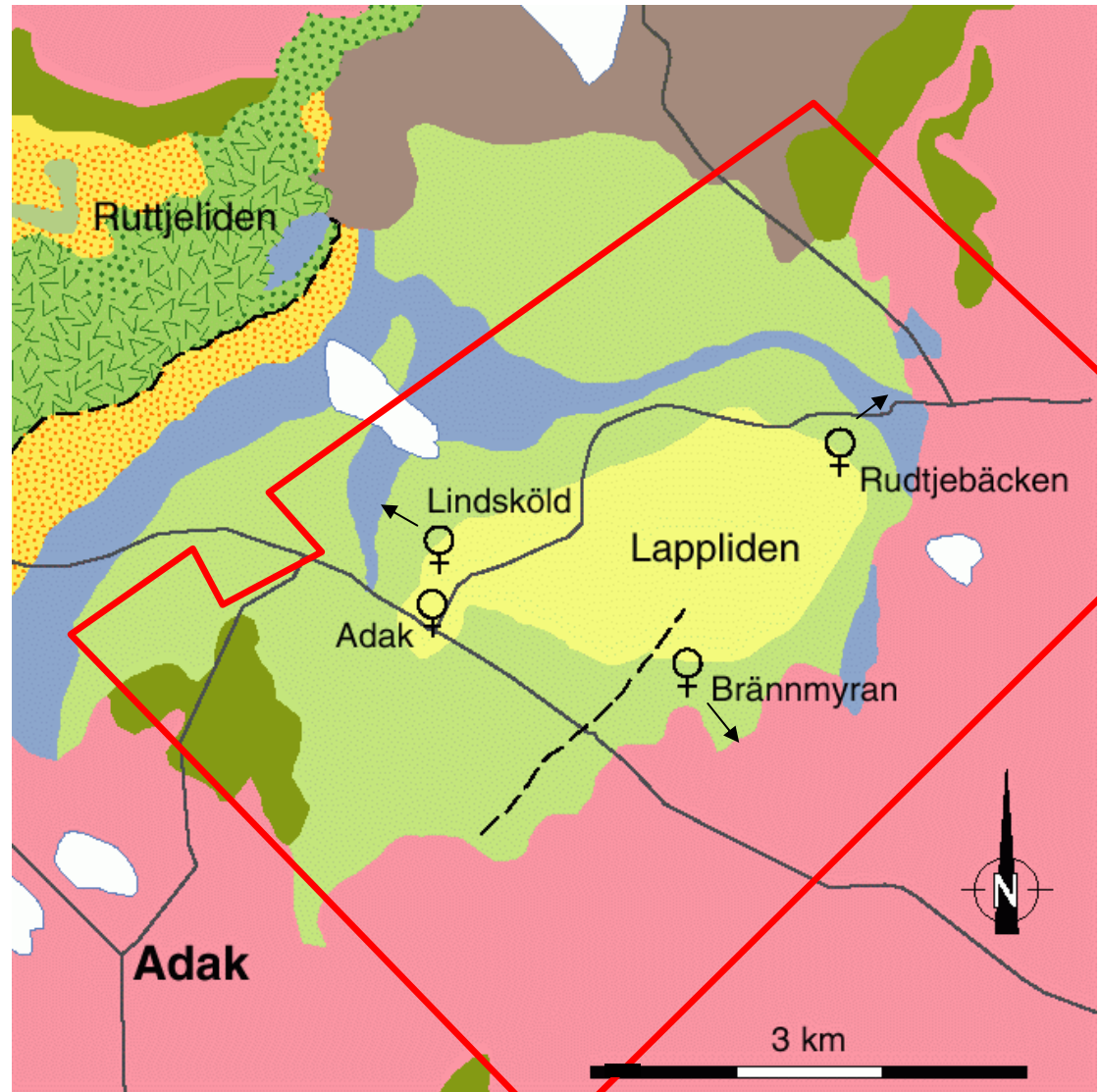
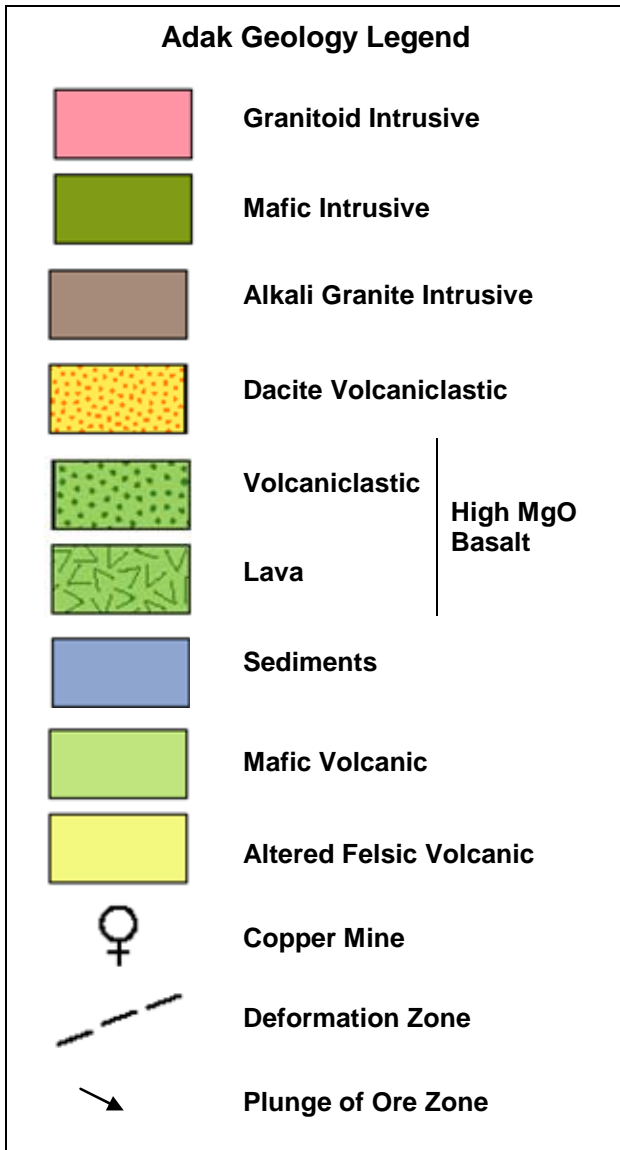
# Adak Project



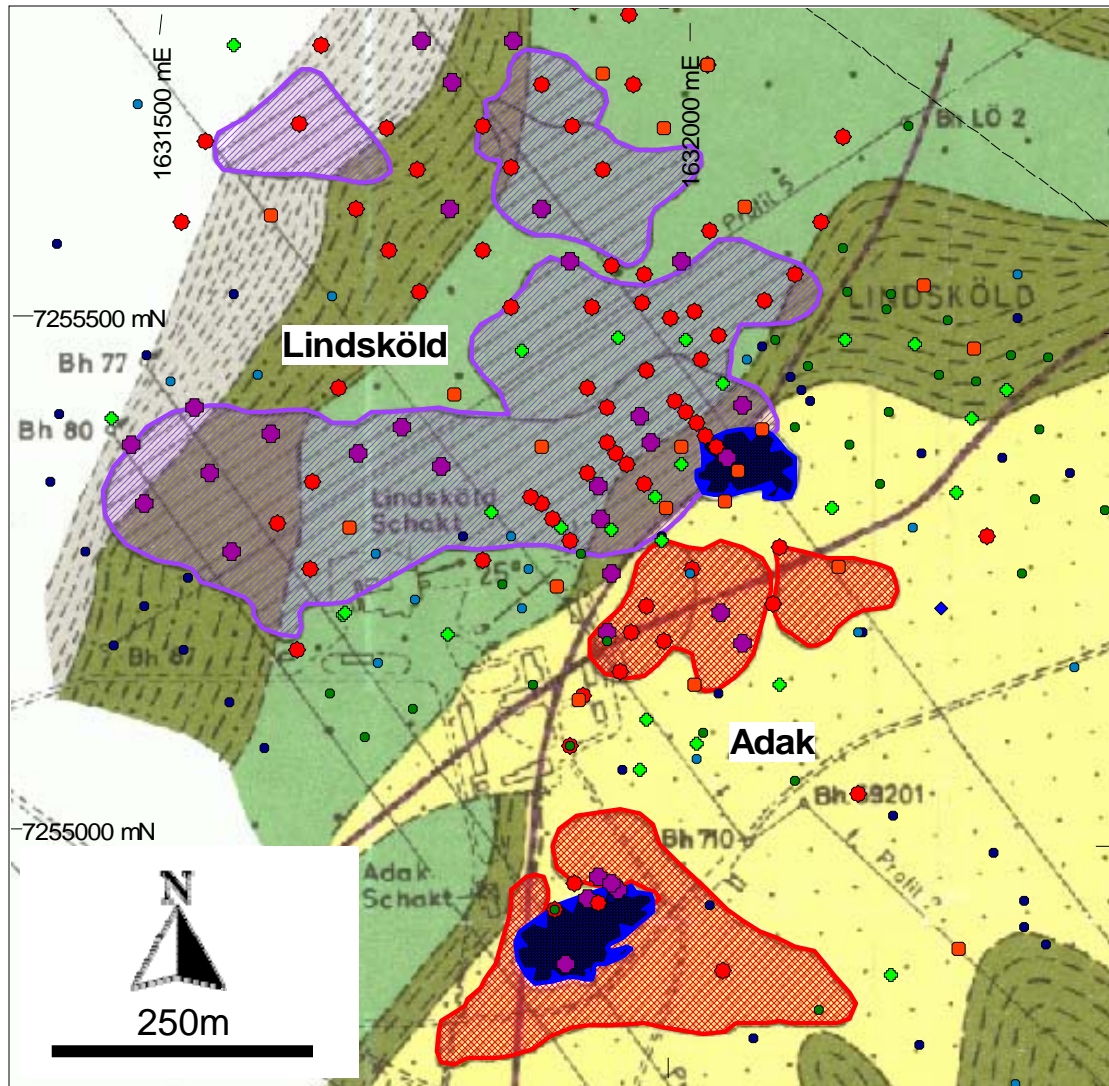
Landsat Image

- 20km NW of Malå, major town of municipality & Geological Survey base.
- 35km by road to closest railway at Slangås.
- 26.5km<sup>2</sup> tenement covers Adak Dome - host to VHMS base metal & related breccia mineralization.
- Adak mines were operated by Boliden from 1940 to 1977. Adak plant burned down in Jan 1978 and operation closed.
- Total production 12.1 million tonnes @ 1.5% copper, plus some gold, silver and zinc credits.
- Adak plant produced 0.45Mt of concentrate containing 25% copper.

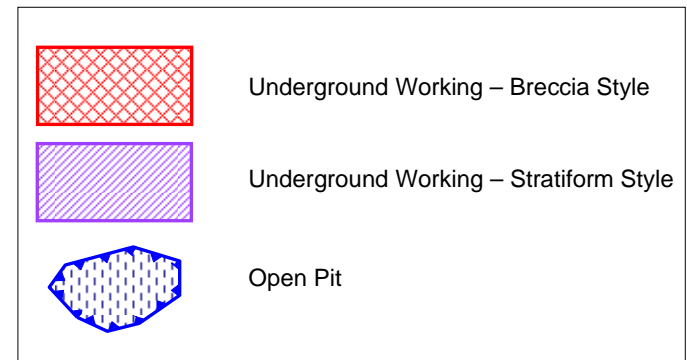
# Geology










# Adak-Linsköld Mine

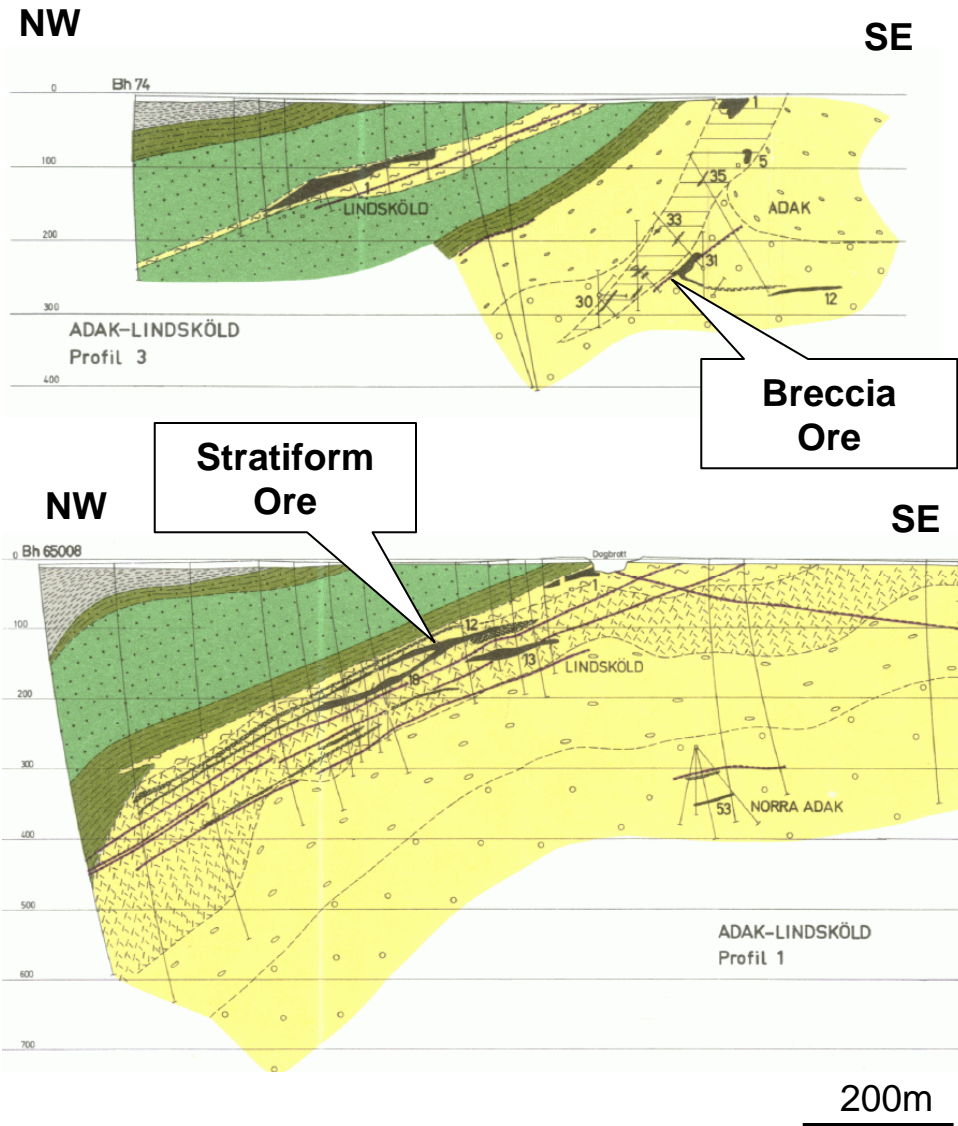


Geology & Mineralisation Plan



| Drill Hole Cu% x m                                                                    |           |       |
|---------------------------------------------------------------------------------------|-----------|-------|
|  | 25 to 135 | (39)  |
|  | 10 to 25  | (104) |
|  | 7.5 to 10 | (38)  |
|  | 5 to 7.5  | (66)  |
|  | 2.5 to 5  | (88)  |
|  | 1 to 2.5  | (77)  |
|  | 0 to 1    | (145) |

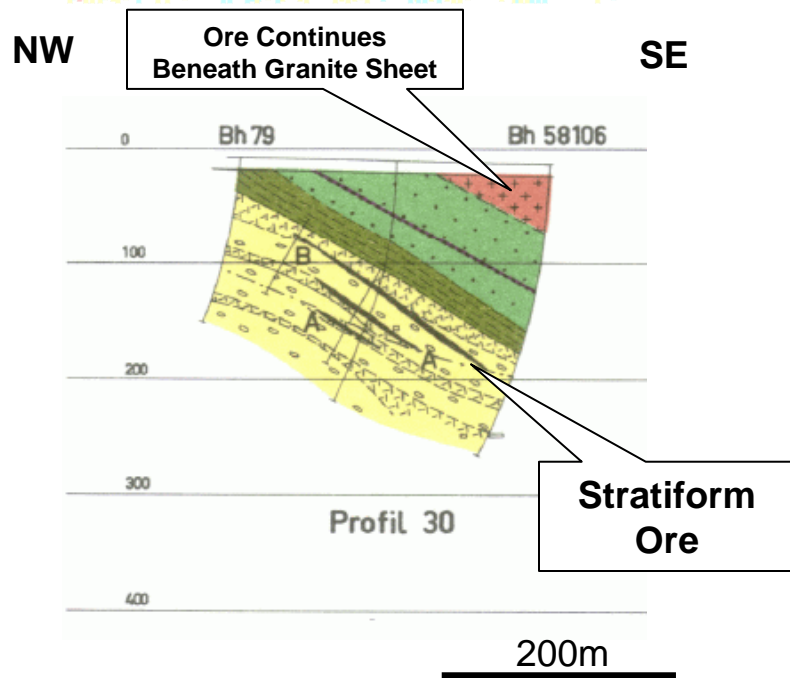
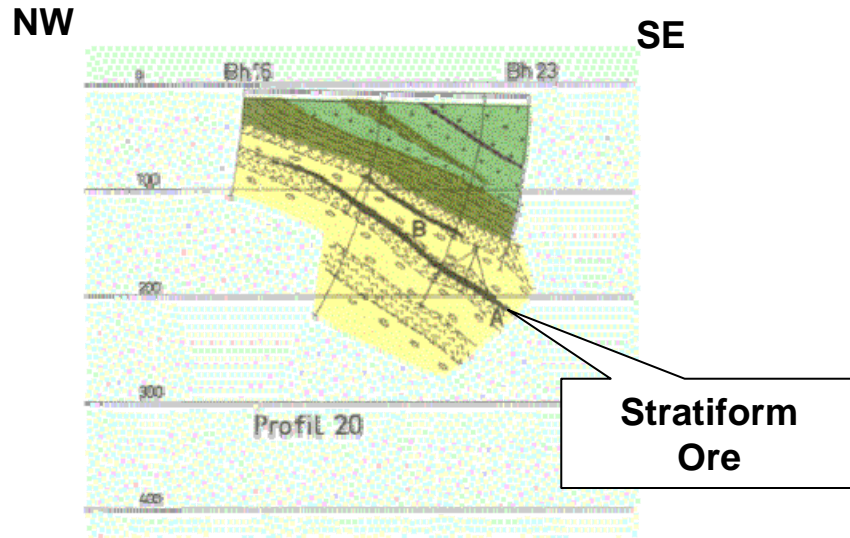
# Adak-Linsköld Mine



- Located in W quadrant of Adak Dome.
- The mine was developed by open cut & underground over an area of 1,200m<sup>2</sup>.
- Mined 6.3Mt @ 1.9% Cu.
- Two styles of mineralisation
  - stratiform (VHMS) in the “altered schists”, sulphide mineralization is massive in the lower part and more dispersed in the upper part.
  - breccia in the “quartzite.” Large number of small elongated orebodies plunge gently towards SW. High grade developed at joint intersections.
- Major sulphides are chalcopyrite and pyrrhotite, plus minor sphalerite. Arsenopyrite is widespread.

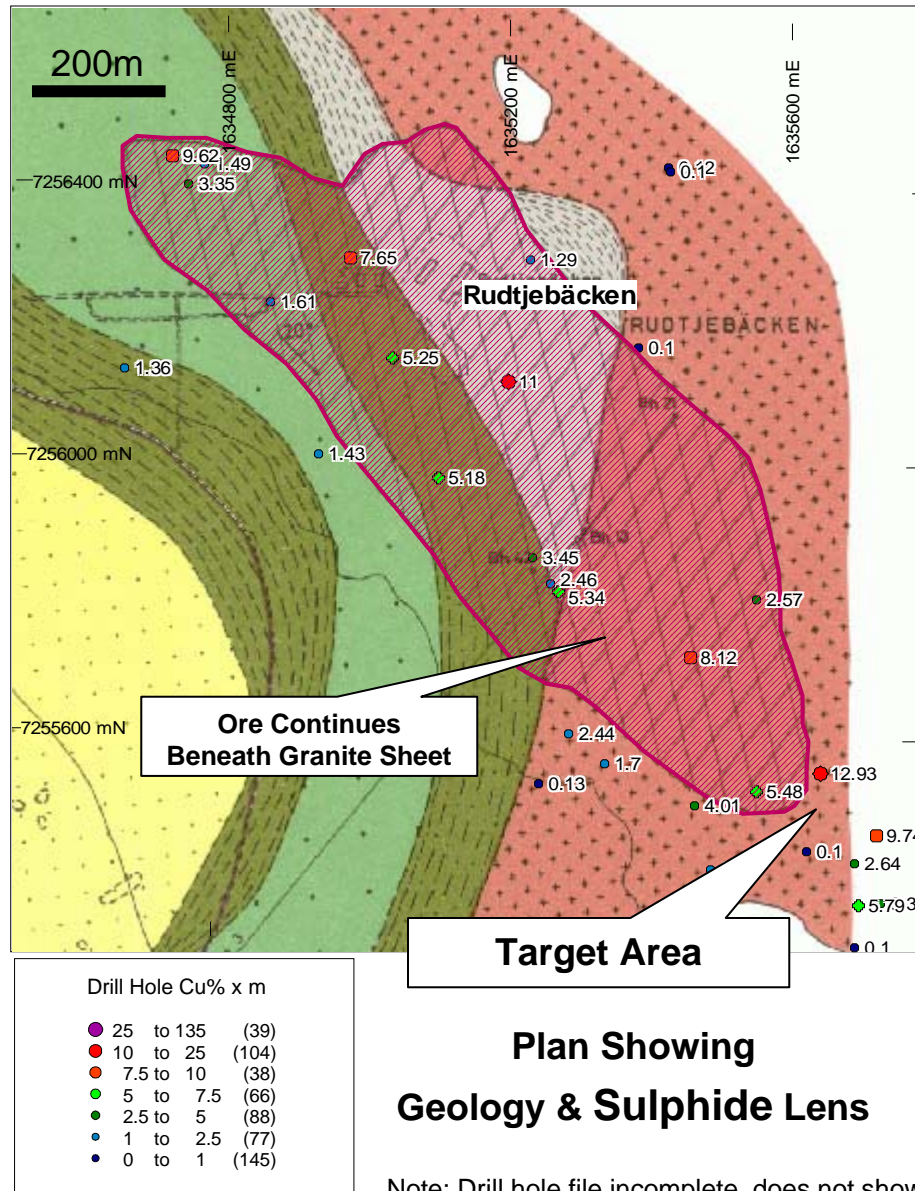


# Brännmyran Mine



- Located in SE quadrant of Adak Dome.
- The Brännmyran Mine was developed by underground over an area of 1,200m<sup>2</sup>.
- Comprises two sheets of VHMS ore, which lie at slightly different horizons and a third orebody to the east.
- Major sulphides are pyrite, chalcopyrite, arsenopyrite & pyrrhotite.
- Mined 1.0Mt @ 1.7% Cu, 1960 - 1976.

# Rudtjebäcken Mine



Note: Drill hole file incomplete, does not show all holes.

- Located in N quadrant of Adak Dome
- The Rudtjebäcken Mine was developed by underground with a length of 1km and average thickness of 4-5m.
- Dips to NE at 20°.
- Comprises a VHMS lens, the SE section is enriched and averages 2.5% Cu.
- Major sulphides are pyrite pyrrhotite sphalerite & chalcopyrite.
- Mined 4.7Mt @ 0.9% Cu, 3% Zn, 0.3g/t Au & 10g/t Ag, 1947 - 1975. Ore transported to Kristinberg for milling.